

MICA POWDER

(Trade Name)

SB-061R

Product Information	Chemical Name : MICA (MUSCOVITE) , CAS No.12001-26-2		
Feature	<ul style="list-style-type: none"> ◇ Low cost and high quality MICA for filler ◇ High quality mica powder, dry-ground and sieved in India . ◇ Excellent quality Indian Muscovite used as raw materials. ◇ Particle size: under 250 μ m (60Mesh) 	Application	<ul style="list-style-type: none"> ◇ Plastics ◇ Paints ◇ Rubber etc.

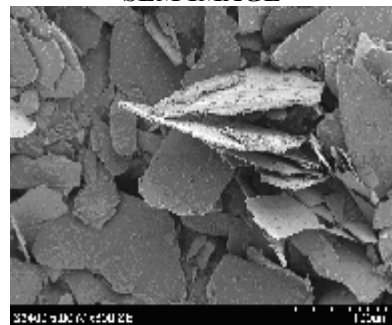
CHARACTERISTICS

TEST ITEM	MIN.	TYP.	MAX.	UNIT	TEST METHOD
Average particle size	—	130	—	μ m	Value "MV" by laser diffraction
60 mesh on (wet)	—	0.5	—	%	JIS K 5101
pH	7	—	10	—	PH meter
Whiteness	—	60	—	—	Colorimeter
Loss on drying	—	0.1	—	%	Infrared moisture meter
Loss on ignition (500°C)	—	—	2	%	500 °C
Bulk density	—	0.27	—	g/ml	JIS K 5101
Chromium	—	—	10	ppm	ICP
Lead	—	—	50	ppm	AAS
Mercury	—	—	1	ppm	AAS
Cadmium	—	—	5	ppm	ICP

GENERAL PROPERTIES

ITEM	Typical value	
Appearance	White fine powder	
Composition	SiO ₂	48 %
	Al ₂ O ₃	36 %
	K ₂ O	8 %
	Fe ₂ O ₃	2 %
	SO ₃	1 %
	H ₂ O (as CRYSTALLIZATION)	5 %
Mohs' hardness	2.8	
Specific gravity	2.7-3.1	
Dehydrate temperature	550°C	
Melting point	1,250°C	

SEM IMAGE



(Contact) YAMAGUCHI MICA CO., LTD. SALES Dept.
 TEL : +81-533-72-2188 / E-MAIL : sales@ymsc.co.jp

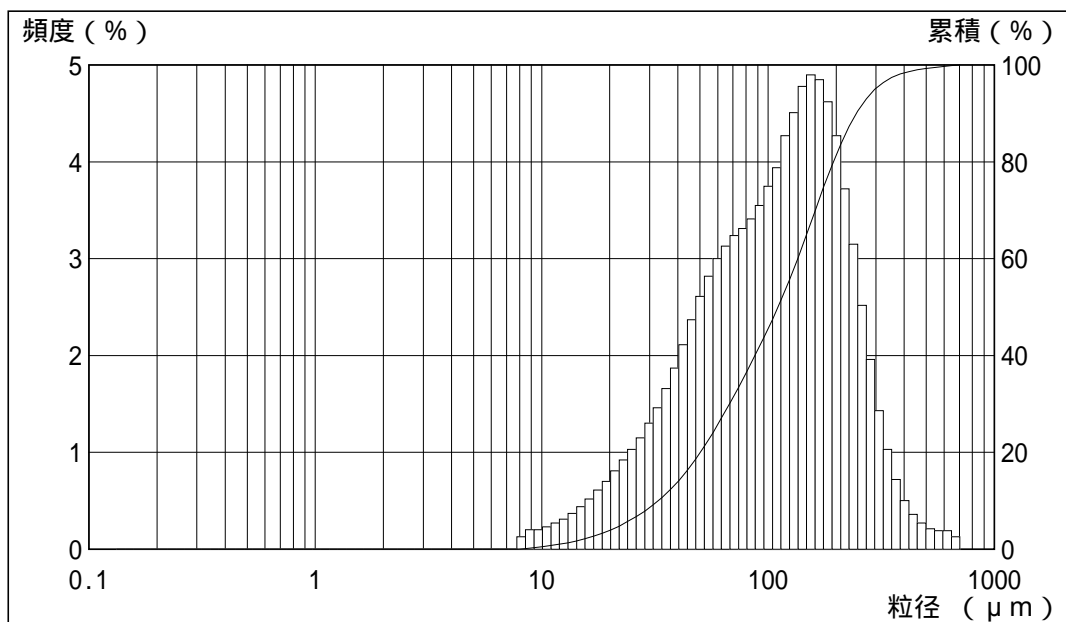
粒度分布測定結果

*** Microtrac (X100) ***

計測回数	1 / 1
サンプル名	SB-061R
ロット番号	20301
計測日付	03/23/12
計測時刻	10:30

ファイル名	C:\¥..¥T19.mtd
データアドレス	56
コメント	056
Run Time	30 (sec)
Transmission	0.96

要約データ				測定条件			
dv = 0.2685	mv = 129.3	Particle Transparency	:	Reflec			
10% = 32.64	mn = 18.03	Spherical Particles	:	n/a			
50% = 110.6	ma = 68.93	Particle Refractive Index	:	n/a			
90% = 245.6	cs = 0.087	Fluid Refractive Index	:	n/a			
	sd = 84.27						



ch.	粒径	累積	頻度	ch.	粒径	累積	頻度	ch.	粒径	累積	頻度	ch.	粒径	累積	頻度
1	704.0	100.00	0.13	26	80.70	36.77	3.31	51	9.250	0.33	0.20	76	1.060	0.00	0.00
2	645.6	99.87	0.19	27	74.00	33.46	3.24	52	8.482	0.13	0.13	77	0.972	0.00	0.00
3	592.0	99.68	0.19	28	67.86	30.22	3.13	53	7.778	0.00	0.00	78	0.892	0.00	0.00
4	542.9	99.49	0.21	29	62.23	27.09	3.00	54	7.133	0.00	0.00	79	0.818	0.00	0.00
5	497.8	99.28	0.27	30	57.06	24.09	2.82	55	6.541	0.00	0.00	80	0.750	0.00	0.00
6	456.5	99.01	0.36	31	52.33	21.27	2.61	56	5.998	0.00	0.00	81	0.687	0.00	0.00
7	418.6	98.65	0.50	32	47.98	18.66	2.37	57	5.500	0.00	0.00	82	0.630	0.00	0.00
8	383.9	98.15	0.72	33	44.00	16.29	2.11	58	5.044	0.00	0.00	83	0.578	0.00	0.00
9	352.0	97.43	1.03	34	40.35	14.18	1.87	59	4.625	0.00	0.00	84	0.530	0.00	0.00
10	322.8	96.40	1.43	35	37.00	12.31	1.66	60	4.241	0.00	0.00	85	0.486	0.00	0.00
11	296.0	94.97	1.96	36	33.93	10.65	1.46	61	3.889	0.00	0.00	86	0.446	0.00	0.00
12	271.4	93.01	2.52	37	31.11	9.19	1.30	62	3.566	0.00	0.00	87	0.409	0.00	0.00
13	248.9	90.49	3.15	38	28.53	7.89	1.15	63	3.270	0.00	0.00	88	0.375	0.00	0.00
14	228.2	87.34	3.72	39	26.16	6.74	1.03	64	2.999	0.00	0.00	89	0.344	0.00	0.00
15	209.3	83.62	4.27	40	23.99	5.71	0.92	65	2.750	0.00	0.00	90	0.315	0.00	0.00
16	191.9	79.35	4.62	41	22.00	4.79	0.81	66	2.522	0.00	0.00	91	0.289	0.00	0.00
17	176.0	74.73	4.85	42	20.17	3.98	0.70	67	2.312	0.00	0.00	92	0.265	0.00	0.00
18	161.4	69.88	4.90	43	18.50	3.28	0.61	68	2.121	0.00	0.00	93	0.243	0.00	0.00
19	148.0	64.98	4.78	44	16.96	2.67	0.52	69	1.945	0.00	0.00	94	0.223	0.00	0.00
20	135.7	60.20	4.51	45	15.56	2.15	0.44	70	1.783	0.00	0.00	95	0.204	0.00	0.00
21	124.5	55.69	4.27	46	14.27	1.71	0.37	71	1.635	0.00	0.00	96	0.187	0.00	0.00
22	114.1	51.42	3.94	47	13.08	1.34	0.31	72	1.499	0.00	0.00	97	0.172	0.00	0.00
23	104.7	47.48	3.75	48	12.00	1.03	0.27	73	1.375	0.00	0.00	98	0.158	0.00	0.00
24	95.96	43.73	3.55	49	11.00	0.76	0.23	74	1.261	0.00	0.00	99	0.145	0.00	0.00
25	88.00	40.18	3.41	50	10.09	0.53	0.20	75	1.156	0.00	0.00	100	0.133	0.00	0.00